



**Spelthorne
Sustainability
Strategy**
2016 – 2019
DRAFT



Contents

1. Introduction.....	3
1.1. Context of the strategy	3
1.2. Purpose of the strategy	3
2. Sustainability Target Areas	3
2.1. Energy Efficiency	4
2.2. Water Efficiency	5
2.3. Waste and Pollution	6
2.4. Sustainable Procurement.....	8
2.5. Sustainable Planning, Housing, and Regeneration.....	9
2.6. Sustainable Transport and Travel.....	10
2.7. Biodiversity, Open Spaces, and Allotments	12
2.8. Awareness and Engagement.....	14
2.9. Risks and Adaptation.....	15
3. Developing, Monitoring and Reviewing the Action Plan.....	15
4. Making Spelthorne Sustainable: Action Plan.....	16
Annex A: Background to Sustainability	34
Annex B: Summary of Current National, County and Local Strategies and Policies Related to Sustainability	36
Annex C: Key Spelthorne Sustainability Achievements Since 2009	38

1. Introduction

1.1. Context of the strategy

Spelthorne Borough Council, like all councils, faces huge challenges, including to budgets, housing, planning, resident's health and wellbeing, transport, and pressure on land and other resources. This strategy offers a framework to ensure value for money of the council's operations and to fulfil our role as a community leader in relation to sustainability.

Spelthorne BC also has a significant opportunity, with the proposed Staines town centre regeneration project and planned council office move from Knowle Green, to ensure sustainability is embedded in all stages of these projects to demonstrate our commitment and leadership towards a sustainable future.

There are a wide range of policies and strategies already in place within all areas of the council's activities, and there is no intention here to duplicate the contents of these documents. Included in much existing documentation are statutory requirements that align with sustainability goals. It is therefore taken that these are met as a minimum, and this sustainability strategy aims to augment rather than repeat these other documents such that sustainability goals and targets go above and beyond statutory levels.

1.2. Purpose of the strategy

The purpose of the Sustainability Strategy is to bring all aspects of council activity that impact on sustainability into one framework. This will facilitate the integration of sustainability into the council's core business processes. It will also ensure that links are made to other goals and targets of the council's activities so that the implementation of sustainability actions is not placing an additional burden onto already overstretched resources. Fortunately, sustainability goals usually align with reduced costs and increased health and wellbeing, and so it is appropriate to include sustainability alongside other council aims.

2. Sustainability Target Areas

Nine target areas have been identified:

- Energy efficiency;
- Water efficiency;
- Waste and pollution;
- Sustainable procurement;
- Sustainable planning, housing, and regeneration;
- Sustainable transport and travel;
- Biodiversity and open spaces;
- Awareness and engagement;
- Risks and adaptation.

These will form the focus and structure for this section and the Action Plans that follow. This section sets out for each of these nine areas:

- The overall sustainability goals in this area;
- The sustainability goals that are already covered by statutory requirements, or by other, procedures, policies or documents;
- Areas not covered by other areas that require addressing in this strategy, and that can provide a focus for even greater sustainability improvements.

2.1. Energy Efficiency

Sustainability Goals

The goal is to reduce energy use, thereby reducing both energy costs and the Greenhouse Gas (GHG) emissions that energy production contributes to climate change. This applies to council buildings and activities, as well as offering guidance and information to residents and businesses of Spelthorne on their energy use.

The biggest motivation for reducing energy use is that energy is very costly, and therefore making energy savings, will help the council, local businesses and residents to save money. The most influence the council has is over its own activities, and reducing energy will help to satisfy the council's need to offer value for money. In reducing energy use, there will also be a positive impact on GHG emissions, health and wellbeing, and air quality.

The statutory requirements in this area are primarily applicable to organisations that qualify for the Carbon Reduction Commitment (CRC)¹. In these cases, there is a statutory requirement to provide annual reporting on energy use across the estate, and to surrender a commensurate volume of CRC allowances. Spelthorne does not currently qualify for this scheme, however, DECC² requires GHG emission data from council activities related to building energy use, and staff and business travel impacts. This is reported under National Indicator 185.

Even without these reporting mechanisms, it is sensible for the council to monitor energy use from all council activities so that potential savings can be identified, and interventions monitored for impact.

Sustainability Goals Covered by Other Documents

The renewed Spelthorne Energy and Water Efficiency Policy (2016-202) is currently being written, and is expected to cover all of the goals listed below in terms of how national and local targets will be met, the measurement of use, and purchasing arrangements of energy. Until this policy is renewed, the goals and targets will remain in the Sustainability Strategy and Action Plan.

¹ CRC Energy Efficiency Scheme Order 2010.

² Department for Energy and Climate Change

The Carbon Management Plan was historically crucial for implementing energy savings; however, with the ending of the current Salix funding in 2014 and all projects complete, this has been archived. It will be reinstated in 2016 if there is sufficient need.

There is a statutory requirement for all buildings over 250m² to display a Display Energy Certificate (DEC). This needs to be done for all the appropriate council properties³.

Currently, all new planning applications must include a commitment to achieve 10% of energy from renewables⁴. The proposals are checked by the sustainability team, but it is important that there is a follow up to ensure that this target is met or exceeded.

Goals Covered by This Strategy

- To ensure the Spelthorne council estate and activities are run using as little energy as possible, achieving an annual 2.5% reduction in GHG emissions from gas and electricity. This will include behavioural interventions to encourage staff to use less energy, as well as reviewing the business cases for installing/fixing renewable energy sources, and reviewing routine activities for opportunities for improvements;
- To encourage Spelthorne businesses to reduce energy consumption. This will include the implementation of behavioural interventions, such as turning off lights, adjusting heating settings, etc., as well as offering advice to businesses in the installation of renewable energy technology and other infrastructure changes, such as insulation, double glazing etc., and to offer guidance on obtaining funding for such interventions;
- To encourage Spelthorne residents to reduce energy consumption through changes to behaviour as well as offering them advice on the installation of renewable energy technology and other infrastructure changes;
- To facilitate improvements to housing wherever possible. This specifically incorporates the goal of working to improve the energy efficiency of properties housing individuals living in fuel poverty.

2.2. Water Efficiency

Sustainability Goals

The aim is to reduce water consumption where possible. Reducing water usage has three implications: firstly, that for bills calculated based on usage, the costs will reduce; secondly, that water is (and is likely to increasingly be) a

³ Note, the previous requirement was that a DEC was needed for buildings over 500m², which was achieved. Now that the legislation covers smaller buildings, some extra buildings fall under this requirement

⁴ This is expected of Government (although set by the council), and is covered within the Core Strategy and Policies, Development Plan Document

globally scarce resource that must be used responsibly; and thirdly, that the cleaning of water to standards to ensure public health is costly and has an inherent impact on other sustainability goals, such as pollution and energy use.

The reduction of water usage applies to council properties and assets, as well as being applicable to residents and businesses.

Sustainability Goals Covered by Other Documents

There are no known statutory requirements governing the use of water. However, the council's Corporate Plan states one (of five) priority as being the efficient use of resources, and therefore would include the use of water.

Goals Covered by This Strategy

To:

- Consolidate the information currently held regarding water usage across council property and assets;
- To set up a means of collecting accurate water usage data so that monitoring of usage is ongoing, and so that areas of potential consumption reduction can be identified and acted upon.

2.3. Waste and Pollution

Sustainability Goals

The goals are to reduce overall waste volumes, and to divert a high percentage of collected waste to recycling facilities. There is also a goal to reduce pollution, and to effectively clear up existing pollution in a pragmatic and cost effective manner.

The motivations for the effective treatment of waste and pollution are related to public health and wellbeing, and to reduce the costs related to waste processing, which can be best met by reducing the quantity of overall waste, and to reduce the waste going to landfill.

Sustainability Goals Covered by Other Documents

There are numerous statutory requirements on Spelthorne that guide the handling and transportation of waste, and its treatment and disposal⁵. Statutory requirements cover waste from resident and commercial premises, and the provision of civic amenity sites. The effective treatment of waste is vital to meet public health and wellbeing standards, but is increasingly governed by cost implications.

⁵ Environmental Protection Act 1990; Landfill Allowances and Trading Scheme (England) Regulations 2004; Waste and Emissions Trading Act 2003; Refuse Disposal (Amenity) Act 1978; Controlled Waste Regulations 1992; Household Recycling Act 2003; Clean Neighbourhoods and Enforcement Act 2005

Statutory acts and regulations have made landfilled waste very expensive, and therefore to meet council aims to reduce costs and increase value for money, there is a strong imperative to decrease waste overall, and to increase the proportion of waste that is diverted from landfill.

The managing of waste and recycling within Spelthorne is guided by the Surrey Joint Municipal Waste Management Strategy, which sets out the county-wide strategy, goals and targets until 2019/20. The targets stated, and that Spelthorne can also aim for by 2019/20 are;

- Total waste per household to reduce to be equal to the lowest quartile level in 2013/14
- 70% recycling and recovery rate
- 0% sent to landfill
- No increase in cost per household from 2013/14 levels

The document also sets out the core values and actions that will guide the activities in order that these targets are met.

Spelthorne have identified 2 areas where adoption of the Surrey Joint Municipal Waste Management Strategy will be challenging due to resource constraints. These are related to the intention to collect the same materials in the same way across Surrey; and offering quality and competitive commercial waste collection services.

There are also numerous statutory requirements on the council related to pollution and environmental protection⁶. Some of these are handled at a SCC level, and the remainder within Spelthorne Environmental Health. To guide procedure there are already documents that govern the management and reduction of pollution. The Air Quality Action Plan is currently under review.

Goals Covered by This Strategy

- To increase the overall recycling and segregated food waste rates;
- To continue to increase the number of materials collected at the kerbside;
- To ensure the Air Quality Action Plan and Contaminated Land Strategy are complete and up to date so they can guide procedures;
- Given that the primary cause of poor air quality within Spelthorne is related to road and air traffic and is therefore somewhat out of the control of the council, Spelthorne has recognised the need to inform at-risk residents (e.g. those with specific medical conditions) of poor air quality so that they can take action to look after themselves. It is important that awareness of this scheme is widespread so that take-up is high.

⁶ Environmental Protection Act 1990; REACH Enforcement Regulations 2008; Clean Air Act 1993;

2.4. Sustainable Procurement

Sustainability Goals

The aim is to include sustainability goals into the existing procurement processes so that all goods and service purchasing decisions taken by the council automatically include consideration of sustainability factors such as energy efficiency, pollution, disposal, embedded energy, and the sustainability policy and social responsibility of the provider. This will enable the council to work towards its values of service to the local community, respect, and value for money. And this will enable the council's purchasing power to set the example to its suppliers in regards to the importance of sustainability considerations, thereby extending the reach and influence of these principles.

Sustainability Goals Covered by Other Documents

Although there are no known statutory requirements that mandate the inclusion of sustainability criteria in procurement, the Government Buying Standards (GBS) are encouraged across all public sector organisations. These offer best practice advice on the purchasing of 11 categories of goods and services, and consider energy in use, water in use, end of life costs, and resource efficiency.⁷ Following this guidance will help Spelthorne to achieve the goals stated above.

It is also recommended best practice to adopt the Procurement Flexible Framework, so that progress towards five specific targets can be measured and monitored. Spelthorne have adopted this framework. These are:

1. People
2. Policy, Strategy and Communications
3. Procurement Process
4. Engaging Suppliers
5. Measurement and Results

The Sustainability Procurement Policy will formalise the intentions of Spelthorne Council with regards to considering sustainability criteria within all purchasing decisions.

Goals Covered by This Strategy

- To complete the Sustainability Procurement Policy, and ensure it is embedded into existing procurement processes and procedures;
- To identify and liaise with the top 10 suppliers to Spelthorne to seek continual improvement to their sustainability processes and procedures;
- To seek continual review and improvement in the procurement Flexible Framework;

⁷ These can be viewed at <https://www.gov.uk/government/collections/sustainable-procurement-the-government-buying-standards-gbs>

- To review the sustainability criteria within consortium contracts to understand the impact on Spelthorne purchases. The next step will be to see where we can influence the criteria so that even greater gains can be achieved with regards to sustainability;
- Write guidance criteria against which tenders can be evaluated on sustainability grounds.

2.5. Sustainable Planning, Housing, and Regeneration

Sustainability Goals

The aim is to ensure that all new planning applications and developments, and all housing is built and maintained to standards that are compatible with sustainability goals. This has many advantages, including increasing energy efficiency, thereby reducing the costs and associated emissions; to decrease the embedded energy within building materials; to reduce pollution; to enhance the health and wellbeing of the building users through the provision of good quality buildings; and to reduce the instances of those living in fuel poverty.

In the proposed Staines town centre regeneration project, it is important that sustainability is considered at all stages of the design, build and operation. This includes the Elmsleigh Phase 4 & Tothill MS car park redevelopments, as well the planned council office move from Knowle Green.

It has also been identified that there is an opportunity for capital investment in improving other council owned or run properties, such that greater sustainability is achieved.

Currently, all new planning applications must include a commitment to achieve 10% of energy from renewables. The proposals are checked by the sustainability team, but there is currently no follow up to ensure that these targets are met. This is covered under the energy efficiency section of this document.

There is also a need to consider the character of the Spelthorne borough, as this enhances a sense of belonging and wellbeing, and is also considered important for attracting new businesses to the area⁸.

Sustainability Goals Covered by Other Documents

These goals are all included in the Core Strategy and Policies, Development Plan Document, and are drawn from the statutory requirements⁹:

⁸ Ref: Spelthorne Economic Strategy 2013

⁹ Town and Country Planning (Environmental Impact Assessment) (England and Wales) Regulations 1999; Environmental Assessment of Plans and Programmes Regulations 2004; Planning (Listed Buildings and Conservation Areas) Act 1990; Town and Country Planning Act 1990; Planning Policy Statement 9

- To protect and improve the quality of the environment, including improving the landscape, promoting biodiversity and safeguarding the Borough's cultural heritage;
- To secure an improvement in the Borough's air quality;
- To minimise the impact of noise on local communities and the environment;
- To safeguard valuable urban open space and provide for open recreational uses;
- To ensure new development is designed to a high standard appropriate to its setting and contributes to an improvement in the appearance of the environment;
- To contribute to making Spelthorne a safer place;
- To ensure development contributes to sustainable transport choices and reduces the need to travel;
- To prevent further urbanisation.

Spelthorne has some conservation areas, and there is a statutory requirement that councils review areas of historical and architectural interest to ensure they are adequately protected¹⁰.

Goals Covered by This Strategy

Due to the comprehensive statutory requirements in this area, the primary aim within the Sustainability Strategy is to ensure that sustainability is considered at all stages of the Staines town centre regeneration that are above and beyond statutory requirements.

An additional goal is to reduce the overall number of properties classed as being in fuel poverty year on year. Working with A2 housing association and private landlords to achieve a solid relationship between the two parties is imperative before a target can be set.

Additionally, the Sustainability Team Leader must report annually to the Housing Strategy and Enabling Officer on the actions set out in the Strategic priority 5: Improve energy efficiency of dwellings and ensure affordable warmth is available to residents. This reporting activity will continue.

2.6. Sustainable Transport and Travel

Sustainability Goals

The intention is to seek ways to increase the sustainability of travel within the borough. This includes reducing the impact of existing travel modes (for example, reducing road congestion so that car emissions reduce), as well as encouraging individuals to travel using more sustainable travel modes, such as walking, cycling and using public transport. There are multiple benefits to such a move, including financial, improved air quality, and increased health and wellbeing from increased exercise.

¹⁰ Planning (Listed Buildings and Conservation Areas) Act 1990

Sustainability Goals Covered by Other Documents

There are statutory requirements on Local Authorities regarding the provision of integrated transport, to promote the availability of public transport, to manage the road network such that traffic movement is efficient, and to promote sustainable modes of travel specifically to and within schools¹¹. There are also requirements related to the upkeep of public rights of way (such as footpaths, bridleways and restricted highways)¹². SCC covers most of this for all Surrey boroughs, and therefore the role of Spelthorne is to support Surrey in these activities.¹³

The Spelthorne Economic Strategy¹⁴ specifically identifies travel and transport as a key weakness of Spelthorne for servicing existing businesses and attracting new ones. It is considered important to reduce congestion, to provide safe routes for cyclists, to ensure environmental standards are met in the event of a third runway being built at Heathrow Airport (especially in relation to air pollution and noise), and to improve rail provision (southern rail link to Heathrow and increased capacity on the approach to London Waterloo). In addition, within the current Air Quality Action Plan, traffic reduction and travel integration were identified by the public as key concerns that would improve air quality, and thereby improve the health and wellbeing of residents.

These requirements have significant environmental, financial and health implications. Public transport, and especially walking and cycling, carry significant financial gains, and emit vastly reduced GHG's per person per mile, thereby helping to improve air quality. Individuals who regularly walk or cycle will also gain cardiovascular and muscular fitness, thereby increasing their health and sense of wellbeing. This is in line with the Spelthorne Health and Wellbeing Strategy (2015-2019).

Goals Covered by This Strategy

The primary aim here is to focus on the travelling of council staff, both related to commuting and to business activities. There are also goals to engage with local residents and businesses where appropriate in order to encourage more sustainable forms of travel.

A Spelthorne Travel Plan has been written to specifically target 2016-2017, and two projects in that timeframe: the council office move from Knowle Green, and the plans for Staines-upon-Thames regeneration.

¹¹ Transport Act 1968; Transport Act 1985; Transport Act 2000; Traffic Management Act 2004; Education Act 1996

¹² Highways Act

¹³ The Surrey Transport Plan can be viewed here: <http://www.surreycc.gov.uk/roads-and-transport/surrey-transport-plan-ltp3>

¹⁴ 2013

2.7. Biodiversity, Open Spaces, and Allotments

Sustainability Goals

Spelthorne is fortunate to have 4 Sites of Special Scientific Interest (SSSI), 80 parks and open spaces, and to have approximately 65% of its land designated as green belt. Maintenance and improvement of these spaces carries many benefits, including offering residents and visitors opportunities for recreation and exercise (crucial for health and a sense of wellbeing), and to help mitigate the problems in the borough of poor air quality. There is also an important aesthetic value in having these spaces, and an inherent value in the wildlife and ecosystems that are supported.

Biodiversity is important for many reasons. Biologically, a diverse ecosystem will help protect areas from soil erosion, floods and other harmful weather conditions; will facilitate the recycling of nutrients; and will help control pollution. Economically, biodiversity is important for medicines and commercial uses; and for cultural and aesthetic values. Generating educational opportunities for biodiversity understanding is vital for the long-term.

Allotments offer a unique local resource. They contribute to the overall sustainability of the area by lowering pollution associated with the commercial growing and transportation of food; and enhancing the health and wellbeing of allotment holders through the physical exercise required in maintaining the land¹⁵, and in the social gains in belonging to a strong community. It is important that allotments are well managed, and that take-up is high so that the full benefits realised.

Encouraging the use of the parks and open spaces is a significant way that the health and wellbeing of residents can be enhanced. Aside from the obvious gain to individuals' fitness and health, there are other gains, such as to reduce NHS service use, and to the work readiness of the population (which was identified as a key weakness of Spelthorne within the Economic Strategy 2013).

Parks and open spaces also provide significant climate change amelioration and mitigation benefits. These include offsetting, or even reversing, climate change; providing shade; rainwater interception, storage and infiltration which reduces flood risk; mitigation of urban heat; improving air quality; and carbon storage and sequestration¹⁶.

¹⁵ Recent research has shown that working an allotment for just 30 minutes a day results in individuals being less prone to anger, anxiety and depression, <http://www.nsalg.org.uk/news/just-half-an-hour-in-the-allotment-can-have-physical-and-mental-health-benefits/>

¹⁶ <http://www.forestry.gov.uk/fr/urqc-7EVE82>

Sustainability Goals Covered by Other Documents

There are numerous statutory requirements to protect and enhance SSSIs, to have regard for the conservation of biodiversity, and to reduce risks from pests and non-native invasion species¹⁷. There is also a statutory requirement to protect hedgerows¹⁸, and for the management of common land and greens¹⁹. These reflect the high importance of the natural environment.

These (and other) requirements are reflected in the Spelthorne Core Strategy and Policies Development Plan Document in terms of how the regulations apply specifically to planning and developments. The Spelthorne Biodiversity Action Plan contains specific actions related to the preservation of three flagship species that are found within Spelthorne: brown galingale, stag beetle and song thrush. The management of the parks and open spaces that are across the borough are guided by the Parks and Open Spaces Development Strategy, as well as by individual park plans, such as the Ecological Management Plan for Sunbury Park (2014-2018).

Allotment provision is a statutory requirement on Spelthorne²⁰, and their management is guided by the Spelthorne Allotments Strategy.

Goals Covered by This Strategy

- To establish annual maintenance plans and strategies where appropriate for ongoing care and development of the SSSIs;
- To focus on a strategy for non-native invasion species removal from the River Colne;
- Completion of river restoration works;
- Research the potential for wildlife corridors and strongholds across the borough;
- To develop park management plans to increase the financial sustainability of the parks, possibly through the creation of “Friends” volunteer groups. The management plans will also seek to increase the inherent value in the parks, whilst increasing access and visitor numbers, and will supplement other plans where they exist;
- To ensure allotment take-up is maximised, ensuring there is no waiting list and there are no empty plots.

¹⁷ Including: Wildlife and Countryside Act 1981; Natural Environment and Rural Communities Act 2006; Conservation of Habitats and Species Regulations 2010; Prevention of Damage by Pests Act 1949; Alien Species Regulation 2015 (EU level)

¹⁸ The Hedgerow Regulations, 1992

¹⁹ Commons Act 1899

²⁰ Small Holdings and Allotments Act 1908

2.8. Awareness and Engagement

Sustainability Goals

The overall aim is to communicate and engage council staff and Spelthorne residents and businesses in sustainability. Raising awareness is one part of this, and includes within the council itself, but also engaging externally with residents and businesses. Although there is limited data to support direct links between information provision and behaviour change, it would be remiss to not include this in this strategy, as it will play an important supportive role for the other actions and goals. It is also vital that the council communicates its own progress towards sustainability goals so that it can promote best practice, and can lead by example.

Community engagement can provide a crucial support for other sustainability goals. For example, engaging with community groups that use halls and huts can complement the energy efficiency goal to increase the efficiency of those buildings, and this offers a joined up message regarding information and action.

Sustainability Goals Covered by Other Documents

There is a statutory requirement to increase access to environmental information²¹.

Goals Covered by This Strategy

- To engage with council staff and contractors so that sustainability goals are communicated, and individuals act to maximise the potential for achieving them;
- To engage with local residents in the areas of reducing energy and water consumption, reducing waste generation, increasing waste separation to aid recycling, and reducing private car use in favour of public transport or walking/cycling. It is also important to promote the use of the parks and open spaces to help increase the population's health and wellbeing;
- To engage with local businesses in the areas of reducing energy and water consumption, reducing waste generation, increasing waste separation to aid recycling, and reducing private car use in favour of public transport or walking/cycling. It is also important to promote sustainable procurement;
- To engage with local schools and community youth groups to encourage thought, debate and behaviour that can support sustainability goals;

²¹ Environmental Information Regulations 2004

2.9. Risks and Adaptation

Sustainability Goals

To ensure that Spelthorne is prepared for risks related to climate change.

Sustainability Goals Covered by Other Documents

Spelthorne is already actively involved in the Surrey Local Resilience Forum, which is a county-wide initiative for considering the risks associated with climate change, and associated emergency planning. These risks include severe weather events and their consequences, including drought triggering wildfires, extreme and prolonged cold, heatwave, and precipitation triggering flooding and land movement.

The risk that most applies to Spelthorne is flooding, and there are additional initiatives in place to ensure preparedness, including community resilience engagement, and longer-term support for the River Thames Scheme. There are statutory requirements on local authorities regarding flood risk management²².

Goals Covered by This Strategy

Ongoing support for engaging with community groups for flood resilience is crucial, and is therefore contained in this sustainability strategy. Practically, flood risk is reduced through the good maintenance and management of watercourses. Ongoing practical support for the River Thames Scheme is vital to ensure plans and developments best meet the needs of Spelthorne residents and sustainability goals.

3. Developing, monitoring and reviewing the action plan

The Action Plan set out in section 4 is designed to deliver an approach that will enable, encourage and engage others, whilst setting an excellent example across all the Council's activities.

Successful delivery is only likely to be achieved by having a high level of commitment throughout the whole of the Council – from Management Team to managers and staff at all levels. There will also be a need for co-operation between all services across the Council and a willingness to change attitudes, behaviour and actions.

Progress on actions will be monitored by the Sustainability Lead and reviewed every six months.

A report on performance against targets contained within the action plan will be produced annually.

²² Flood and Water Management Act 2010

4. Making Spelthorne Sustainable: Action Plan

Workstream	No.	Action	Owner	Target Date	Progress/Outcome
1. SUSTAINABLE ENERGY					
Energy Efficiency	1.1	Council building energy reduction: <ul style="list-style-type: none"> • Conduct energy audits on the Depot and 3 Day Centres • Implement the DEC²³ for all required council properties • Identify new energy efficiency projects and apply as required for Salix funding 	Sustainability Lead	Mar 2016 Mar 2016	
	1.2	Gather data to enable a 1990 baseline for GHG emissions to be created	Sustainability Lead	Dec 2016	
	1.3	Review sub-meter data for the Council Offices for ongoing energy monitoring and reporting	Sustainability Lead	Quarterly	
	1.4	Install automatic meter reading (AMRs) on all gas and electricity meters	Sustainability Lead	Ongoing	
	1.5	Liaise with Action Surrey to increase the prominence and accessibility of the advisory service that is available for business ²⁴	Sustainability Lead	Jun 2016	
	1.6	Investigate the feasibility of working with community groups to improve the energy efficiency of leased community buildings ²⁵	Sustainability Officer / Asset Manager	Jun 2016	

²³ Display Energy Certificate, which is required for buildings over 250m²

²⁴ At present, Action Surrey website and activities are very skewed to households, but this is due to change in 2016

	1.7	Build on and increase completed installations of energy efficiency measures through Action Surrey by 2% year on year	Sustainability Lead	Annual Review	
	1.8	Work with Action Surrey and Environmental Health to identify further sources of funding for measures to keep homes warm and save money on energy bills for the most in need/vulnerable ²⁶	Sustainability Lead	Ongoing	
	1.9	Establish ways to improve vulnerable homes: <ul style="list-style-type: none"> • Identify the vulnerable homes through liaison with groups such as Age UK • Establish funding mechanisms 	Sustainability Lead	Apr 2016	
	1.10	Investigate the current situation regarding funding available to private landlords, and make a plan regarding how Spelthorne can facilitate improvements to these houses/flats for improved energy efficiency, especially in fuel poverty cases	Sustainability Lead	Aug 2016	
Renewable Energy Generation	1.11	Review findings of report into the renewable technologies currently installed on Council assets, and write business case for fixing/replacing/removing as appropriate	Sustainability Officer	Jun 2016	
	1.12	Investigate opportunities for the installation of renewable technology on further Council assets and potential funding mechanisms	Sustainability Officer / Asset Manager	Oct 2016	

²⁵ This would include, for example, village halls, pavilions, scout huts etc. and would be best coordinated with routine maintenance task, such as when a roof requires repair, investigate the feasibility of improving insulation at that time. It's unlikely to be feasible to do building upgrades at other times

²⁶ This will then lead to a new action to apply to the appropriate places to secure the funding and manage its spending

	1.13	Review 10% renewable requirement on new developments: <ul style="list-style-type: none">• Review procedure• Check enforceability• Review whether 10% is correct target	Sustainability Officer	Apr 2016	
--	------	--	------------------------	----------	--

2. SUSTAINABLE WATER					
Water Consumption Reduction	2.1	To consolidate all information on water usage across council owned/run buildings and assets. This will include: <ul style="list-style-type: none"> • Knowing where water is used • Understanding the type of bill (i.e. is it based on usage or paid at a flat rate) 	Sustainability Lead	Mar 2016	
	2.2	To ensure all water usage data is monitored on a regular and ongoing basis: <ul style="list-style-type: none"> • Liaise with Lotus to utilise their staff in collecting water meter readings (or find another way) 	Sustainability Lead	Dec 2016	
	2.3	To set a target for reducing water consumption across council owned/run buildings and assets	Sustainability Lead	Dec 2016	
	2.4	Work with ADSM to establish further water saving projects	Sustainability Lead	Apr 2016	
Water Sourcing and Sewerage	2.5	Ensure that all new buildings and refurbishments of existing buildings have a feasibility study conducted at the planning stage for: <ul style="list-style-type: none"> • Rain water harvesting • Borehole water extraction • Sewerage treatment via non-mains means (e.g. reed beds) 	Sustainability Lead / Asset Manager	Ongoing	

3. WASTE AND POLLUTION					
Waste & Recycling	3.1	<p>Increase the overall recycling rate in the Borough. National recycling rate currently stable or declining. WDF²⁷ rates in Spelthorne: 12/13: 42.7%, 13/14: 41.2%, 14/15: 43.2%.</p> <ul style="list-style-type: none"> Target: increase WDF recycling rate to 44% (£25k allocated for targeted communications in Q4 2015/16) 	Senior Waste & Recycling Officer / Waste & Recycling Officer	Annual Review ²⁸	
	3.2	<p>Increase the number of materials currently collected from the kerbside by investigating the potential for collection of new materials e.g. beverage cartons, batteries, nappies</p>	Senior Waste & Recycling Officer / Waste & Recycling Officer	Dec 2017	
	3.3	<p>Promote greater food waste recycling and decreased food waste in general and in the waste stream across the borough.</p> <ul style="list-style-type: none"> Support SCC in the analysis of food waste after the sticker campaign 	Senior Waste & Recycling Officer / Waste & Recycling Officer	Dec 2016	
	3.4	<p>Improve the quality of the contamination and recycling data by instigating an education programme with the bin crews</p>	Senior Waste & Recycling Officer / Waste & Recycling Officer	Sep 2016	

²⁷ WDF is a standardised measure of Waste Derived Fuel

²⁸ This is to be undertaken in the summer period every year to coincide with the publication of the annual waste figures

Air Quality	3.5	Renew the Air Quality Action Plan (last updated 2005)	Environmental Health/ Sustainability Officer	Nov 2016	
Contaminated Land	3.6	Complete the Contaminated Land Inspection Strategy	Environmental Health/ Sustainability Officer	Sept 2016	

4. SUSTAINABLE PROCUREMENT					
Council activities	4.1	Liaise with the current top 10 suppliers within the Spelthorne direct supply chain ²⁹ and use our buying power to ensure that continual improvement in processes and procedures occurs ³⁰	Sustainability Lead/ Sustainability Officer	Sept 2016	
	4.2	Strengthen the Procurement Processes across the Council, in partnership with other departments to: <ul style="list-style-type: none"> • Confirm that Level I of the procurement flexible framework is valid and maintained • Achieve Level II of the procurement flexible framework 	Sustainability Lead	Sept 2016 Jun 2017	
	4.3	Review the sustainability criteria for Surrey Framework contracts and Regional Consortium contracts to understand the impact on Spelthorne specific procurement	Sustainability Lead	Dec 2016	
	4.4	Write the Sustainable Procurement Policy for Spelthorne activities	Sustainability Lead	Mar 2016	

²⁹ i.e. those not part of a Surrey-wide Framework Contract or a Regional Consortium Contract.

³⁰ This might include ensuring that the company has a Sustainability Policy that can be shared, and an Action Plan that is helping the company to reduce the environmental impact of their activities, and to increase the social value of their work.

	4.5	Establish the process for influencing the upcoming large tenders (e.g. grounds maintenance 2019, start thinking about 2017; vehicle replacement etc.) ³¹	Sustainability Lead	Mar 2016 ³²	
	4.6	Create guidance criteria against which tenders can be evaluated on sustainability grounds ³³	Sustainability Lead	Jun 2016	
	4.7	When cleaning contracts are due for renewal, ensure new contracts mandate the use of products that minimise negative environmental and social impact ³⁴	Asset Manager / Sustainability Officer	Feb 2016 ³⁵	

³¹ Is this captured already within other aspects of the procurement section?

³² Date set to be 3 months before waste vehicle replacement due, but need to check date and whether this is early enough to be able to influence process

³³ This would need to cover any type of contract, e.g. purchasing vehicles, market stalls, wheelie bins, or anything required for grounds maintenance, street cleansing, refuse collection, highway verge maintenance, housing etc

³⁴ This would need to consider, for example, the pollution caused by chemicals entering the water/air, the social responsibility of the company, and the use of recycled and recyclable packaging

³⁵ The Knowle Green cleaning contract is due for renewal/renegotiation in November 2016

5. SUSTAINABLE PLANNING, HOUSING, AND REGENERATION					
Staines Regeneration	5.1	<p>Council move from Knowle Green:</p> <ul style="list-style-type: none"> • Ensure that new council offices meet or exceed minimum criteria for energy efficiency, water use, and consider the ease and proximity of public transport services • Investigate the feasibility that the Knowle Green site redevelopment considers sustainability at all stages of the planning and implementation that are above and beyond the minimum required under existing planning and building regulations 	Asset Manager / Sustainability Officer	3 monthly review	
			Regeneration Lead / Sustainability Officer	3 monthly review	
	5.2	<p>Elmsleigh Phase 4 & Tothill MS car park redevelopment:</p> <ul style="list-style-type: none"> • Investigate the feasibility of implementing sustainable practices in the design, build and operation of new and refurbished buildings that are above and beyond the minimum requirements within planning and building regulations 	Regeneration Lead / Sustainability Officer	6 monthly review	
Council Building upgrades	5.3	Establish a Capital Works Programme (5 year) for ongoing building upgrades and refurbishment, and ensure that sustainability considerations (energy and water use, social impact, financial analysis etc) are embedded in this programme	Asset Manager / Sustainability Officer	Jun 2016	

Housing Improvements	5.4	Investigate opportunities for influencing private landlords to improve housing for sustainability (energy/water efficiency), particularly in fuel poverty cases	Sustainability Lead	Dec 2016	
	5.5	Work with A2 Housing Association to survey and improve the energy/water efficiency of their housing stock	Sustainability Lead	Sep 2016	
	5.6	Report to John Hesbrook on the actions set out in the Strategic priority 5: Improve energy efficiency of dwellings and ensure affordable warmth is available to residents.	Sustainability Lead	Annually	

6. SUSTAINABLE TRANSPORT AND TRAVEL					
Sustainable Travel	6.1	<p>Staff Commuting:</p> <ul style="list-style-type: none"> • Conduct a Staff Travel Survey to generate an up to date baseline of commuting impact³⁶ • Decrease the environmental impact of commuting by increasing the number of staff cycling, walking or taking public transport to work when the council offices move from Knowle Green, by becoming involved in the working group on the office move and implementing behaviour change measures³⁷ • Encourage staff to undertake driver efficiency training. Target: 20% of employees 	Sustainability Officer	Mar 2016	
				2016-2017	
	6.2	<p>Business Miles³⁸:</p> <ul style="list-style-type: none"> • Ensure the processes are in place for measuring business travel (for a baseline and for ongoing monitoring) • Set a target for reducing business mileage impact (through investigating a pool car/bicycle) 	Sustainability Officer	Mar 2016	
				Apr 2016	

³⁶ The impact is likely to change with the move from Knowle Green, including the likely outcome that less parking spaces will be available in the new building, thereby strongly encouraging the use of more sustainable commuting modes

³⁷ This is more explicitly described in the Spelthorne Travel Plan 2016-2017

³⁸ This is for internal Spelthorne Borough Council activities such as visiting sites, waste collection etc.

	6.3	Wider Engagement: <ul style="list-style-type: none">• Understand where involvement is possible in wider infrastructure planning so that influence can be exerted to encourage public transport and pedestrian/cyclist improvements, as well as efforts to reduce congestion	Sustainability Officer	Aug 2016	
--	-----	---	------------------------	----------	--

7. BIODIVERSITY, OPEN SPACES, AND ALLOTMENTS					
Countryside & Commons	7.1	<p>Create an annual maintenance plan for Staines Moor</p> <ul style="list-style-type: none"> • This will chiefly cover the management requirements needed to safeguard the floral species present • Other important factors include the encouragement of nesting, feeding and migrant birds • The ecological, invertebrate and fish surveys should be scheduled every 5-10 years (last done 2009) 	Countryside & Commons Officer	Oct 2016	
	7.2	<p>Commence an outline strategy for potential improvements to the River Colne, including:</p> <ul style="list-style-type: none"> • Working with the Environment Agency on a feasibility study³⁹ • Improve connections with the neighbouring landowners concerning fluvial restoration works and invasive species 	Countryside & Commons Officer	Dec 2016	
	7.3	<p>Complete the river restoration works along the River Ash, Studio's Walk in conjunction with the South Groundworks 'Weir today gone tomorrow' project⁴⁰</p>	Countryside & Commons Officer	Apr 2016	

³⁹ The funding is allocated by the Environment Agency, and a timescale/start date is to be set

⁴⁰ Funded by the Colne Valley Partnership – South Groundworks, and the Environment Agency

	7.4	Undertake vegetation control on Shortwood Pond and establish a fishing club affiliation to help part manage the pond	Countryside & Commons Officer	Apr 2016	
	7.5	Research the potential for improved corridors and strongholds for pollinating insects	Countryside & Commons Officer	Mar 2017	
Parks & Open Spaces	7.6	Develop a park management plan for all parks to include the long term aims for the park ⁴¹	Allotments Officer / Countryside & Commons Officer	Mar 2016	
	7.7	Apply for funding to develop café and toilet block in Laleham Park	Head of Sustainability and Leisure	Mar 2016	
Allotments	7.8	Promote allotments to a wider audience, in particular families and younger people. This might include: <ul style="list-style-type: none"> • Developing a new communication/ engagement plan that links allotment rental with health and wellbeing, sense of community, knowing where food comes from, and healthy eating • Creating more half plots to make allotment rental more attractive 	Allotments Officer	Feb 2016	

⁴¹ This could include factors such as: overall aim for the park, any need for increased access/parking, any need for installation of specific activities such as playground, any appropriate measures to increase biodiversity, a sustainability plan (e.g. reducing the use of chemicals, increasing the efficiency of bin emptying, improving air quality through tree planting, water management, selecting sustainable materials) etc. Crucially, this will also need to establish a more sustainable financing model for the ongoing maintenance parks, possibly through the creation of voluntary "Friends" groups

	7.9	Liaise with Customer Services to improve the administration of allotments, and production of management figures. This will facilitate the goals of having no allotment waiting list and no free sites	Allotments Officer / Head of Sustainability & Leisure / Head of Customer Services / IT	Jan 2016	
Greening buildings	7.10	For new and existing buildings, investigate the feasibility of installing green roofs and green walls	Sustainability Officer / Asset Manager	Dec 2016	

8. AWARENESS RAISING AND ENGAGEMENT					
Business Engagement	8.1	Engage with Spelthorne SME's to help them reduce energy and water consumption, and to reduce waste. Help them to see the links between sustainability goals and their business viability and sustainability. This could be done through the Spelthorne Business Forum ⁴²	Sustainability Officer	Oct 2016	
	8.2	Engage with the top 10 major businesses to encourage development of staff and business travel policies and improvements	Sustainability Officer	Oct 2016	
Council Activities	8.3	Establish ways to reduce energy and water consumption across all council properties and activities through behaviour change and awareness raising campaigns	Sustainability Lead	Ongoing	
Resident Engagement	8.4	Engage with Spelthorne residents with the aim of reducing water usage <ul style="list-style-type: none"> • For example, offer shower timers, cistern "buddies" etc. • Utilise the existing communications and networks, for example, the Bulletin, social media etc. 	Sustainability Lead / PR & Marketing Officer	Ongoing	
	8.5	Build on existing resident engagement campaigns to encourage more walking/cycling and use of public transport, and less private car use	Sustainability Officer	Aug 2016	

⁴² Engagement with businesses may be most effective if presented in the form of case studies and endorsements, rather than as simply council staff providing information. It is important that any intervention is evaluated for impact so that resources are used most efficiently for maximum gain

	8.6	Increase the number of individuals signed up for the Air Alert (84 at Nov 2015). Do this through targeted communications (bulletin articles, notices at pharmacies, schools, PCT ⁴³ , occupational health within large companies, and the use of social media) <ul style="list-style-type: none"> • Target: 110 by April 2016 	Environmental Health/ Sustainability Officer/ PR & Marketing Officer	Annual review	
Schools and Education	8.7	Seek opportunities for biodiversity education within local schools and community groups ⁴⁴	Countryside & Commons Officer	Ongoing review	
	8.8	Re-engage with all schools to encourage less car use for school run	Sustainability Officer	Sept 2016	
General Promotion	8.9	Promote the activities and achievements within the Sustainability Team (e.g. local press, Bulletin, social media) as a way of raising awareness and demonstrating that the council is “getting it’s house in order”	PR & Marketing Officer/ Sustainability Team	Quarterly	

⁴³ Primary Care Trust

⁴⁴ This is already ongoing, and in early 2016 includes a Wildlife Education Programme at a Spelthorne primary school, in conjunction with Surrey Wildlife Trust

9. RISKS AND ADAPTATIONS					
Flood Resilience	9.1	Improve the procedure for Ordinary Watercourse management through: <ul style="list-style-type: none"> • Use of the 2008 Ordinary Watercourse Assessment to develop ongoing plan of Watercourse management • Improved communications through publicising when work is carried out and increasing public knowledge of riparian responsibilities • Full understanding of council riparian responsibilities, and ensure this is considered in all planned works 	Sustainability Officer	Dec 2015	
				July 2016	
				Dec 2015	
	9.2	Investigate the potential of finding a permanent solution to the Sweeps Ditch issues as part of the Staines town centre regeneration project	Sustainability Officer / Regeneration Lead	Jun 2016	
Climate Change Resilience	9.3	Improve community resilience to flooding by <ul style="list-style-type: none"> • Assisting the setting up of local flood groups and community flood plans. • Working with partner agencies and the National Flood Forum to support local flood groups. 	Sustainability Officer	Dec 2017	
	9.4	Support the Environment Agency in implementing the River Thames Scheme and associated work	Sustainability Officer	Dec 2017	
	9.5	Continue involvement with the Surrey Local Resilience Forum	Head of Sustainability & Leisure	Ongoing	

Annex A: Background to Sustainability

According to the United Nations Intergovernmental Panel on Climate Change (IPCC), which is comprised of the world's leading scientific experts in the field of climate change, our climate is undergoing dramatic changes as the direct result of greenhouse gas (GHG) emissions from human activity. This will result in many changes to weather patterns, which in turn will affect water distribution, crop growing, ecosystem stability, and increased risk to human life and property from storms and weather events.

In response, the field of sustainability has grown, which focusses on the reduction of GHG emissions, but also recognises the need for principles of sustainability to cover the social, political and economic functioning of communities, businesses, and society.

In 2005, the UK Government published "Securing the Future – Delivering the UK Sustainable Development Strategy", which formalised the government's approach to sustainability. It came after many years of research, evidence and campaigning following the publication by the World Commission on Environment and Development in 1987 of "Our Common Future". This report set out the first definition of sustainable development, to include principles related to enabling us to meet our needs in the present without compromising the ability of future generations to meet their own needs. Although this definition has been heavily scrutinised and changes suggested (not least in its use of "needs", and its lack of inclusion of non-human species), it remains a cornerstone within the history of sustainable development.

"Securing the Future" has contextualised sustainability for a UK context, and contains useful guiding principles (figure 1) and priorities (figure 2) that can help to guide activities at a national, county and local level.

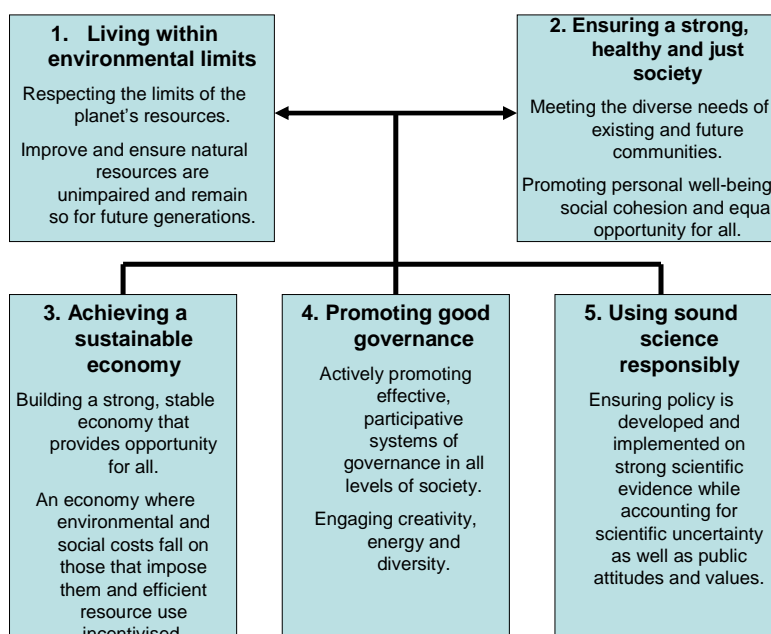


Figure 1: UK's guiding principles underpinning sustainable policy

FOUR NATIONAL PRIORITIES			
SUSTAINABLE DEVELOPMENT			SUSTAINABLE COMMUNITIES
1. Sustainable Consumption & Production	2. Climate Change	3. Natural Resource Protection	
<ul style="list-style-type: none"> - Water - Sustainable procurement - Sustainable construction - Transport - Housing - Waste 	<ul style="list-style-type: none"> - CO₂ emissions reduction - Adapting to climate change - Energy 	<ul style="list-style-type: none"> - Biodiversity - Local Development Framework - Air quality - Regeneration - Conservation and green space strategy 	<ul style="list-style-type: none"> - Health Strategy - Community Safety - Built Heritage - Consultation & Community Involvement

Figure 2: The four national priorities

There are many other documents, processes and events that influence the contemporary sustainability sector. For example, global negotiations have so far been unsuccessful in establishing legally-binding agreements; and there has been an increase in extreme weather events.

Spelthorne Borough Council responded to calls for more sustainable procedures and policies, by publishing their first Sustainable Development Strategy in 2009. This was accompanied by a comprehensive Action Plan, which was used to generate, measure and monitor progress towards the defined goals and targets.

Since 2009 the world, including the world of sustainability has changed. For Spelthorne, as for all Local Authorities, there is increased pressure on budgets and spending, and huge demands on land, housing, transport, health, and on cleaning, preserving and protecting the local environment. More than ever, sustainability cannot be considered as a standalone or “nice to have” consideration. Instead it is crucial that sustainability is built in to all processes and procedures automatically, and is linked to other goals and targets that are essential to achieve. Fortunately, over the long term many sustainability goals will naturally align with reducing expenditure, which will help Spelthorne Borough Council to satisfy its core values for providing value for money, and efficient, cost-effective and quality services.

Annex B: Summary of Current National, County and Local Strategies and Policies Related to Sustainability

National

Securing the Future – Delivering the UK Sustainable Development Strategy (UK Government Framework 2005)
Climate Change Bill (2008)
UK Climate Projections Briefing Report (UKCP09)
IPCC Fifth Assessment Report – Climate Change (2013)
Control of Pollution Act (1974)
Environmental Protection Act (1990)
Town and Country Planning Act (1990)
Clean Air Act (1993)
Environment Act (1995)
Pollution Prevention and Control Act (1999)
Clean Neighbourhoods and Environment Act (2005)
Sustainable Communities Act (2007)
Climate Change and Sustainable Energy Act (2006)
National Air Quality Strategy (2007)
UK Post-2010 Biodiversity Framework (2012)
Sustainable Procurement Policy Statement (2011)
Procuring the Future (2006)

County

Surrey Strategic Partnership Plan (2010-2020)
Surrey Climate Change Strategy (2011)
NW Surrey CCG Community Prevention Plan (2015/16)
Surrey Transport Plan (2014)
Low Carbon Surrey 2020
Carbon and Energy Policy 2015-2019
'Confident in Our Future' Corporate Strategy 2013-2018
Joint Health and Wellbeing Strategy (2013)
Biodiversity and Planning in Surrey (2014)
Surrey Rail Strategy (2013)
Joint Municipal Waste Management Strategy (2015)

Spelthorne

The Spelthorne Community Plan (2005-2015)
Spelthorne Corporate Plan (2013-15)
Asset Management Plan (2009)
Core Strategy and Policies: Development Plan Document (2009)
Air Quality Action Plan (2005)
Contaminated Land Inspection Strategy (2001)
Local Development Framework 2006-2026
Spelthorne Economic Strategy (2013)
Local Economic Assessment (2013)
Leisure and Cultural Strategy (2014-16)
Sustainable Development Strategy (2009)
Carbon Management Plan (2009)
Spelthorne Travel Plan (2012-2015)

Health and Wellbeing Strategy 2015-2019
Surrey Transport Plan: Spelthorne Local Transport Strategy (2014)
Spelthorne Biodiversity Action Plan 2008-2011
Procurement Strategy (2013)
Spelthorne Energy Policy 2011-2015
Parks and Open Spaces Development Strategy 2010-2020
Allotments Strategy 2009-2014
Spelthorne Economic Development Strategy (2013)
Towards a Sustainable Future – A Self-Funding Council (2014)
Ecological Management Plan for Sunbury Park (2014-2018)

Annex C: Key Spelthorne Sustainability Achievements Since 2009

Energy Efficiency

- Adoption of the Carbon Management Action Plan setting clear targets. This ran until 2014 in line with the funding available for energy efficiency available at that time. This has been reviewed in 2015, and a new Energy and Water Efficiency Policy (2015-2020) written
- Setting of an ambitious target in 2012 to reduce the cost and carbon emissions by 30% from the baseline set in 2009/10. To date (Nov 2015) 80% of this target has been achieved through the implementation of a series of energy efficiency and money-saving measures across our estate, including Powerperfector, energy efficient lighting and loft and cavity wall insulation. These have generated on-going savings and been funded through the Salix scheme
- Installation of Combined Heat and Power (CHP) at Spelthorne Leisure Centre reducing the significant risk of increasing energy prices and achieving good partnership work with Everyone Active. Savings are approximately a fifth of consumption levels
- Annual Primary and Secondary school Eco-conferences for students, as well as ad hoc educational visits to schools when requested. These include issues such as energy efficiency, food miles, worldwide impacts of behaviour and lifestyle choices, flooding/extreme weather events, and waste
- Installed energy saving measures at 80 Park Homes

Water Efficiency

- Estate-wide Water Audit is underway and are generating ongoing savings. For example, savings in the first 5 months of 2015 were < £2,000

Waste & Pollution

- Conducted waste composition analyses in 2010 and 2013
- Developed and implemented a county-wide Data Management System to collect, collate, record and report all borough and districts waste data, which should save significant officers time across Surrey (launch end 2015)
- Recycling percentage increased from 33.5% in 2009/10 to 44.2% in 2014/15
- Introduced fortnightly kerbside textile collections in March 2015 (35 tonnes collected in first 6 months)
- Bulky waste collections now made by Surrey Reuse Network instead of Streetscene (since Sept 2015). 2.5 tonnes of furniture diverted to reuse/recycling in first month of service, compared to 2 tonnes in total in 2014/15
- Door-stopping campaign run to target areas with lowest recycling rate (2015)
- Spelthorne currently has a lower than average contamination rate (in Surrey) and hence lower than average gate fee costs. 29 bin housing

units were installed by 2015 to contribute to contamination rate improvements. Work on 16 flatted properties (representing 55,000l of recycling capacity) shows a 69% decrease in contamination across 6 months

- Food waste collection service launched in Oct 2011 has to date (Aug 2015) diverted >7,600 tonnes of food waste from the residual waste. Also jointly run communication campaigns regarding food waste; early figures show 20% uplift in food waste service
- 'No food waste please' stickers to 2nd half of the borough to encourage greater use of food waste collection services
- Increased capacity of the garden waste collection scheme to more than 8,500 residents has diverted >16,750 tonnes of garden waste to compost since 2009 (to Aug 2015)
- Waste Electrical and Electronic Equipment (WEEE) recycling banks installed at 5 local recycling centres
- Introduced kerbside collections for Waste Electrical and Electronic Equipment (WEEE) and fabric, December 2015
- Increased resources in Waste and Recycling in 2015, with two permanent recycling officers (1.6 FTE) for the first time
- Introduction of the sale of food waste bags at council premises and borough libraries in July 2013 to make them more available and affordable. Spelthorne were the first in Surrey to do this. Also ran a compost campaign, including offering discounted compost bins
- Spelthorne has taken part in two recycling trials in 2014 and 2015 (with WRAP, SCC and Recoup) which will help inform policy and which has increased our recycling tonnages
- £35k funding received to install recycling bin housings at recycling banks and in difficult flatted properties which is cutting contamination and increasing tonnage
- Signed up to the Air Alert to enable residents to obtain notices about poor air quality so they can take actions to keep themselves well. Within the first 6 months of this system being active in Spelthorne, 84 individuals have signed up

Sustainable Procurement

- Achievement of Level 2 of the Procurement Flexible Framework which is a UK Government self-assessment mechanism for greening the supply chain
- Top 10 spend suppliers were identified
- Begun the adoption and incorporation of the Social Value Act requirements into Procurement documents and processes
- A slot on New Staff Induction Sessions – a general message and regarding Sustainable Procurement

Sustainable Planning, Housing, and Regeneration

- Through our consultative role with Planning the Sustainability team has reviewed over 200 planning applications, over the past 5 years, approving 430,000kWh of renewable energy to be installed across the borough, thereby reducing the amount of money residents are

spending (and associated GHG emissions produced) on both electricity and gas

- Developed a number of guidance documents for developers and planning officers to assist with the implementation of low carbon technologies in new developments

Sustainable Travel and Transport

- Completed a Staff Travel Plan 2011
- Staff Environment Days which have included information on local produce (reducing food miles)
- Staff Environment Days which have included driving simulators (for encouraging fuel efficient driving) and bike maintenance (to encourage greater cycling)

Biodiversity, Open Spaces, and Allotments

- New hedge laying border on Dumsey Meadow (2013 and 2015) to enhance habitat connection, and for insects, birds and small mammals. Grazing programme with the Surrey Wildlife Trust, along with an annual cut, to allow the more dominant less desirable grass species to be targeted by the cattle
- Funding from the Higher Level Stewardship scheme has enabled new grazing arrangements, improved wildlife monitoring and better fencing
- Undertaken ecological, invertebrate and fish surveys on Staines Moor and a river restoration study on the River Colne (2009)
- Improved maintenance regime and scrub clearance for Staines Moor and utilisation of section 106 money for new fencing and underpass mural
- Improved maintenance regime for Shortwood Common, including a successful programme of ragwort removal and new border fencing
- Improved overall management of allotment sites with site reps for all sites, monthly liaison between allotment officer and site reps, shorter turn around for available plots and improved plot markings

Risks and Adaptation

- Following on from the Ordinary Watercourse Assessment of 2008, key critical ditches and ordinary watercourses have been monitored, maintained and cleared when required, reducing flood risk to neighbouring residents and properties
- Implemented an improved maintenance agreement, for Sweeps Ditch pump and chambers. This improved the systems resilience, reduced instances of the course drying up and reduced costs